

Service description

Product: SP400	Service description no: 3125-S007	Ver: 1
-------------------	---	-----------

Symptom

Imbalance in the drive shaft.

Caused by

The drive shaft is bent. The pump has crashed into something.

Solution

Replace the drive shaft. If the cover tube is bent, it must also be replaced.

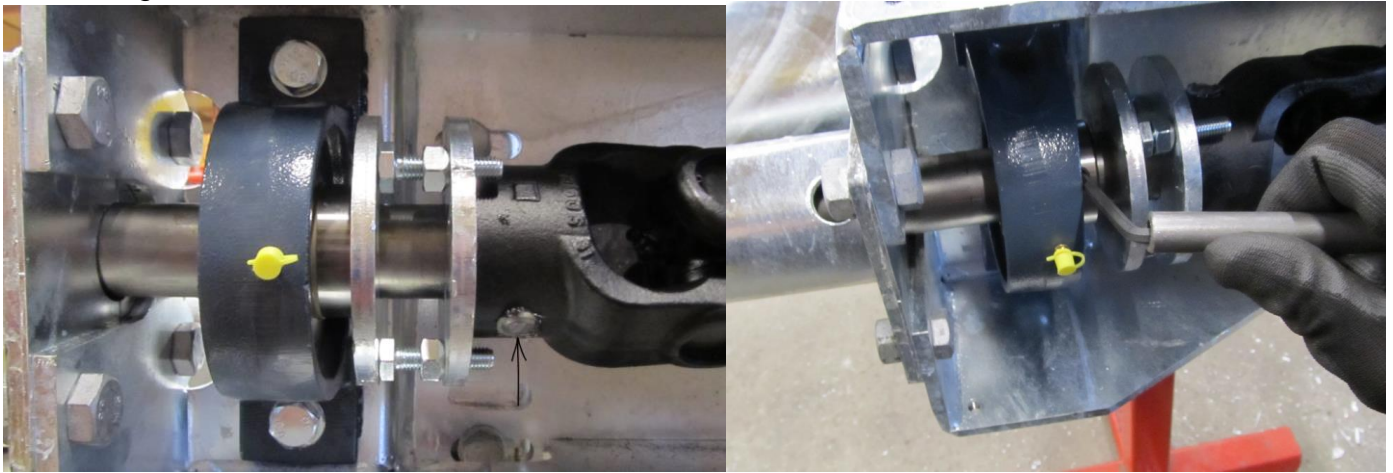
Release the set screws on the cover tube.



Release the cover tube where it is attached to the pump housing.



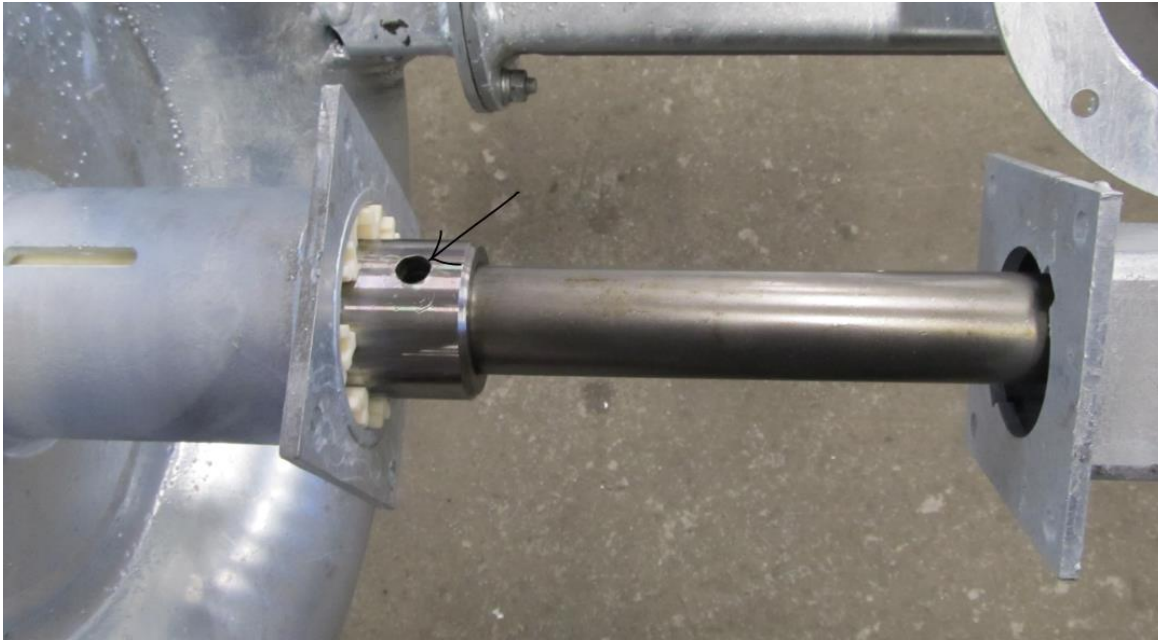
Push out the breaker bolt which secures the drive shaft to the double joint. Release the set screws on the bearing.



Release the cutter on the pump housing.



Pull out the drive shaft and the impeller together. If there is runout in the drive shaft, push out the breaker bolt which attaches the impeller to the drive shaft.



Remove the impeller from the drive shaft.

Push the new drive shaft through the pump housing and the cover tube.

Assemble the pump by following instructions in reverse order.